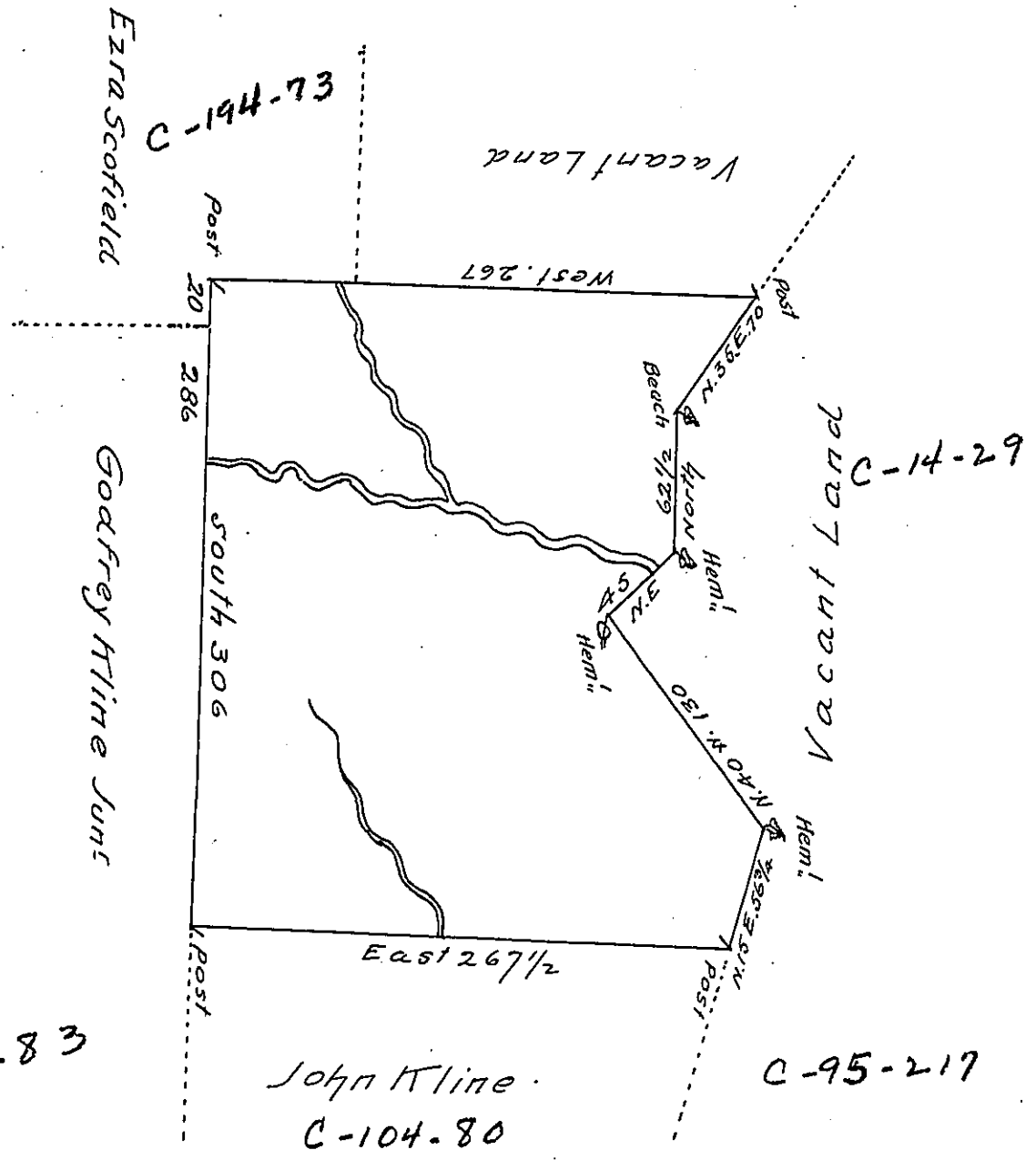


PAGE 160

A-6-83



By Virtue of a Warrant dated the 28th September 1785. Surveyed
 the 16th August 1786 to Godfrey Kline J^r: the above described Tract
 of Land situate about one mile from Delaware River nearly oppo-
 site Homan's Eddy in the County of Northampton Containing Four
 hundred & thirty four acres & the allowance of Six p cent &c^o

Geo Palmer D.S.

Daniel Brodhead Esq^r
 Surveyor General.

IN TESTIMONY that the above is a copy of the original remaining on file in
 the Department of Internal Affairs of Pennsylvania, made
 conformably to an Act of Assembly approved the 16th day of
 February, 1833, I have hereunto set my Hand and caused
 the Seal of said Department to be affixed at Harrisburg,
 this twenty fifth day of July 1905

Loac D Brown
 Secretary of Internal Affairs.